



Weather Widget Usage Guide

Table of Contents

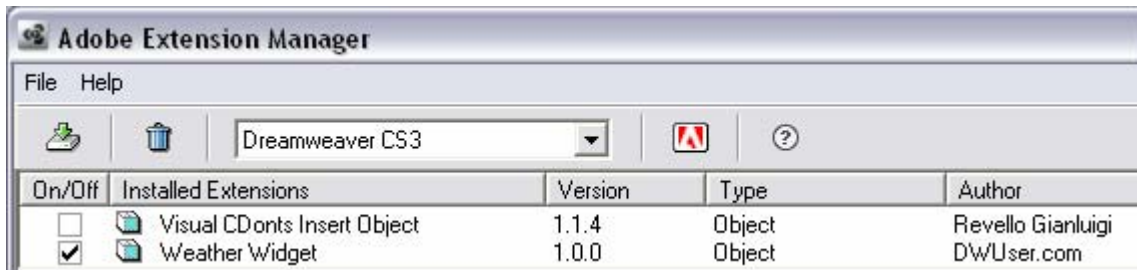
Introduction.....	3
Getting Started - Accessing the Extension.....	4
Using the Extension.....	6
Making Changes	9
Advanced Options.....	11
Conclusion.....	12

Introduction

Welcome to the Weather Widget extension for Dreamweaver. The extension allows you to easily add weather conditions to your web page. This guide details the process of using the extension.

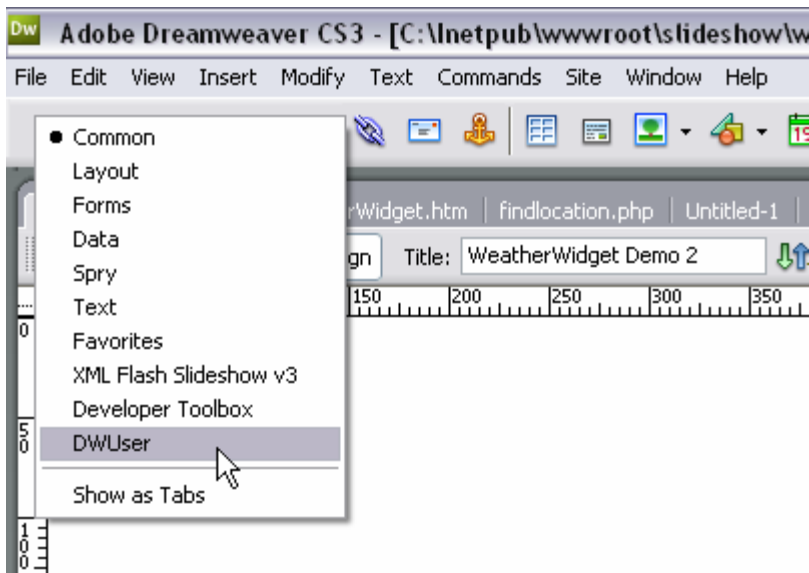
Getting Started - Accessing the Extension

Once you have installed the extension using the Extension Manager, it should appear under the list of installed extensions:



Restart Dreamweaver, and open or create an HTML page. The file must be saved prior to inserting a Weather Widget.

Once the page has been saved, select the 'DWUser' section of the Insert Bar:



On the DWUser section, click the 'Insert Weather Widget' button:



The Weather Widget wizard will open. You are now ready to begin the process of using the extension.

Using the Extension

The wizard will appear as shown:



The screenshot shows a dialog box titled "Weather Widget - Insert/Edit" with a close button (X) in the top right corner. The dialog is divided into several sections:

- Welcome to the Weather Widget wizard!** (indicated by a yellow circle icon)
- Data Options**:
 - Location ID: (ZIP Code or [Location Code...](#))
 - Units: (dropdown menu)
- Display Options**:
 - Background Color: [Use Default](#)
 - Background Alpha: (0 [transparent] - 100 [opaque])
 - Use Bevel: (dropdown menu)
- Localization Options**:
 - Loading Text:
 - Humidity Text:
 - Wind Text:
- Insert Options**:
 - Upload Supporting Files (recommended) [Save Selection](#)

On the right side of the dialog, there are three buttons: "Insert", "Cancel", and "Help".

There are four sections of options: Data options, Display options, Localization options, and Insert Options.

Data Options

There are two available data options - the location ID and Units. The location ID can either be a US ZIP code, or a location code. Use the [Location Finder](#) to locate an international location code.

You can specify either English or Metric for the units option. If Metric is specified, the temperature will be in degrees Celsius, and the wind speed in KPH. If English is specified, the temperature will be in degrees Fahrenheit, and the wind speed in MPH.

Display Options

The display options control how the widget is styled. The text color property controls the color of the text on the widget; the default is white. You can specify a background color using the color picker. The background alpha property allows you to make the widget transparent. A value of 0 is fully transparent, whereas a value of 100 is fully opaque. The Use Bevel option controls whether the widget displays the glassy background highlight / bevel.

Localization Options

This section allows you to specify localized labels for the loading text, humidity text, and wind text.

Tip - when changing the wind and humidity values, make sure that you don't remove the trailing space.

Insert Options

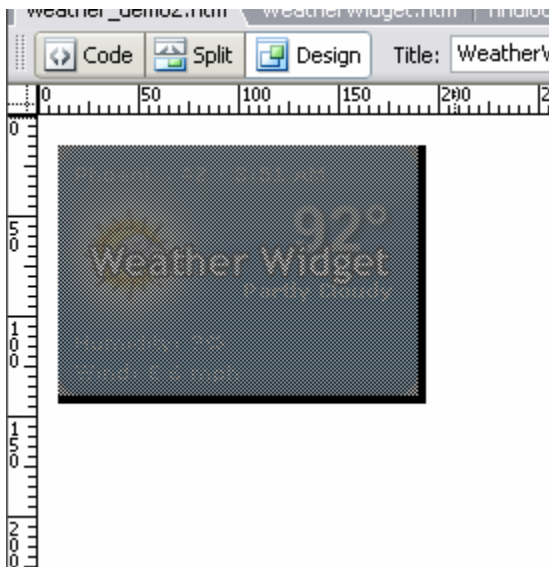
By checking the 'Upload Supporting Files' checkbox, you can enable auto-upload of the necessary supporting files.

Important Note: This feature only is applicable if the page is within a Dreamweaver site. If Dreamweaver is unable to upload the files, you will receive a notification telling you that you must upload the files manually. The files which must be uploaded are in the (document folder)/weatherwidget/ folder, or (site root)/weatherwidget/ folder.

Once you have specified all of the values for the wizard, click the Insert button to insert the Weather Widget:



The Weather Widget element will now appear in your HTML page:



You are now ready to view the Weather Widget in your browser.

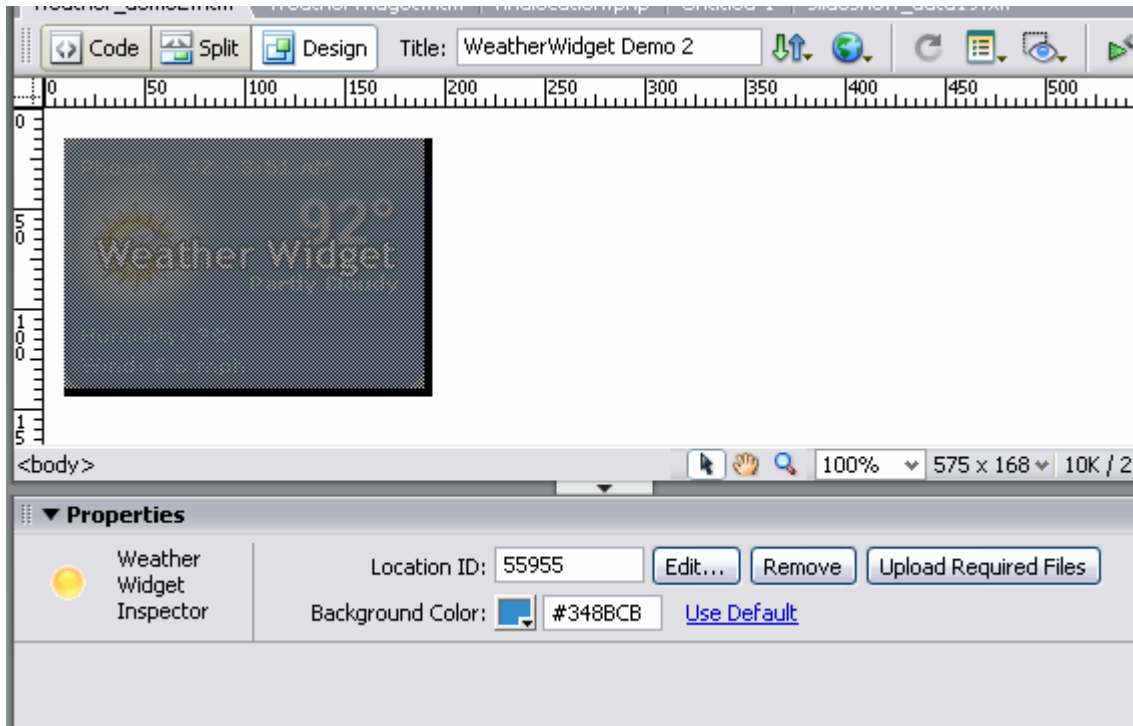
Common Preview Problems

Due to Flash Player security restrictions, you may not be able to view the Weather Widget until you upload the files to a remote server and view the HTML page using the `http://` protocol.

To learn about how to make changes, continue on to the Making Changes section.

Making Changes

To make changes after you have inserted a Weather Widget into your HTML page, first select the element in Design View by clicking it once. In the Property Inspector, you will see the Weather Widget Inspector:

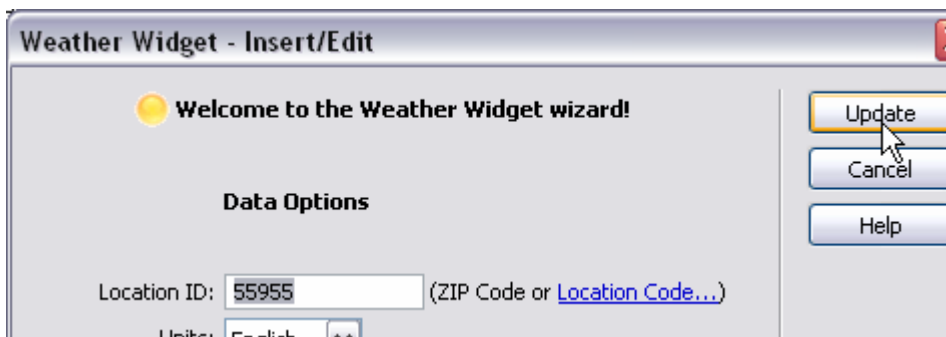


Using the inspector, you can easily change the location ID or background color, and upload the required files (see important note in Usage section regarding auto-upload).

To re-enter the wizard, click the **Edit...** button. This will launch the Edit Wizard:



The Edit Wizard functions in the same manner as the Insert Wizard. Once you are done making changes in the Edit Wizard, click the Update button to exit:



Advanced Options

The time displayed on the widget represents the last time the data was updated. To remove the time from the widget, first select the widget in Design View, then switch to Code View. Find this line in the code:

```
// <[[DATA]]>
WeatherWidget({swf:'weatherwidget/weath
```

Add the value shown highlighted below:

```
// <[[DATA]]>
WeatherWidget({showTime:'false',swf:'weatherwidget
</script>
```

Note - this option is only available in version 1.0.3 and higher.

Conclusion

Thank you for going through this Usage Guide. You should now be familiar with how to use the Weather Widget extension to easily add weather conditions to your web pages. If you have further questions or issues, visit the Weather Widget product support page:

<http://www.dwuser.com/weatherwidget/support.php> .

This document Copyright 2007 DWUser.com. Other trademarks, logos, etc are property of their respective owners.